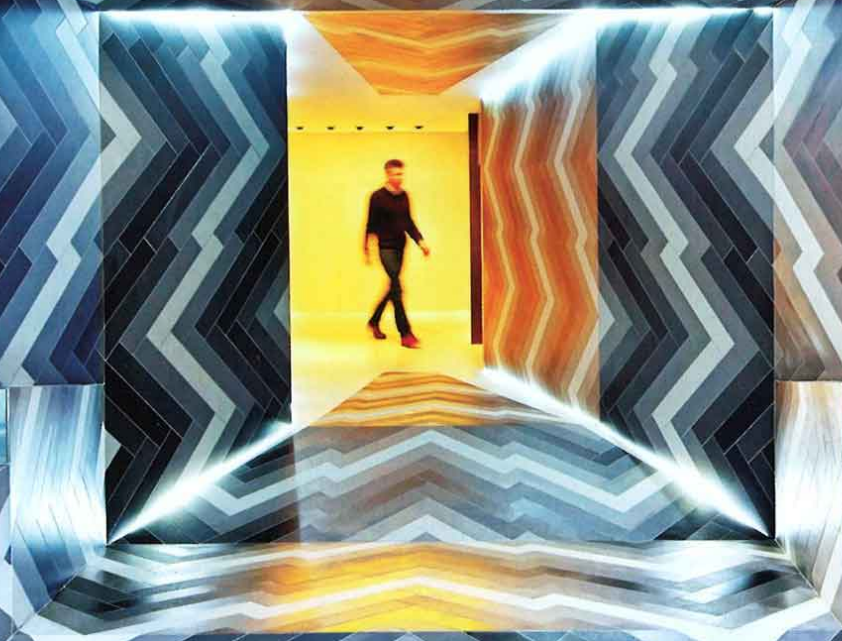


INTERIOR DESIGN[®]

APRIL
2013



fashion explosion



Fixtures by modern masters come back into production
turn it back on

1. Alvar Aalto's 1952 A110 pendant fixture in steel painted white with yellow plastic cable by Artek. **circle 414**

2. Alvar Aalto's 1937 A330S pendant fixture in steel painted black with yellow plastic cable by Artek. **circle 415**

3. George Carwardine's 1934 Anglepoise Original 1227 in aluminum powder-coated Duck Egg Blue, Pebble White, and Warm Beige by Anglepoise. **circle 416**

4. Le Corbusier's 1954 Projecteur 365 wall sconce in sandblasted aluminum in Bleu Sablé by Nemo. **circle 417**

5. Lluís Porqueras's 1979 Funiculí floor lamp with an iron base and stem and an aluminum shade lacquered moss gray, beige, red, white, and black by Marset USA. **circle 418**

6. Anglepoise Giant 1227 in aluminum powder-coated Duck Egg Blue by Anglepoise. **circle 419**

See page 126 for sources. ➔





market**sources**
lighting

126 INTERIORDESIGN.NET APRIL.13

New Lounge Chair & Coffee Table
Designed by Benjamin Cherner



Molded plywood
classics sustainably
made in the U.S.A.

Available with or
without arms in
natural or classic
walnut finish.

Cherner[®]
chernerchair.com
Circle 124

Marset USA

Master ceramist Xavier Mañosa teams with Mashallah Design partners Hande Akçayli and Murat Koçyigit on *Pleat Box*, a pendant fixture that looks like fabric, but is actually rigid ceramic. Consider white, gray, terra-cotta, black, or brown for the exterior of the four models, white enamel or 10-karat gold for the interior. 646-727-4250; marsetusa.com. **circle 437**



Ercol Furniture

The venerable furniture maker conspires with textile provocateur Timorous Beasties for special editions of its circa 1956 *Studio* sofa. The 81-inch-long solid-beech frame and elm back sport cushions covered in specially commissioned fabric patterns, such as *Horizontal Decouper*, a black-and-white toile that's hand-printed on linen. 44-1844-271800; ercol.com. **circle 438**



Fab

The e-commerce enterprise aligns with the Andy Warhol Foundation for the Visual Arts to proffer *Brillo Box Pouf*, a rethinking of the artist's iconic 1964 sculptures by Quinze & Milan partners Arne Quinze and Yves Milan. Here, the familiar logo is screen-printed on 16-inch-square high-density foam and sealed with a waterproof polyurethane coating. 877-463-4322; fab.com. **circle 439**

Wildspirit

Space-age sleek splashes down on the terrace with Gerd Couckhuyt's outdoor *Moon Lounger*. The Jetsons-esque frame is constructed of beech that's been burned, glued, and finished with resin for weather resistance. Acrylic covers the taut seat and back. There's a leather-upholstered indoor version, too. Through D'Apostrophe, 212-334-5045; dapostrophe.net. **circle 441**



Regeneration

Introduced in 2000, Christine Miele and Valerie Guariglia re-

visit their glass-topped *Re:24* table, commissioning artist Dylan Egan to dress it in a grid of whimsical graphics. The images are silk-screened and then enameled on the shelf, shown here in maple, but which can be customized in any wood. Same goes for the powder-coated color of the steel frame. The size options, however, are just two: either 48 or 60 inches long by 16½ high and 24 wide. 212-741-2102; regenerationfurniture.com. **circle 440** ➔