



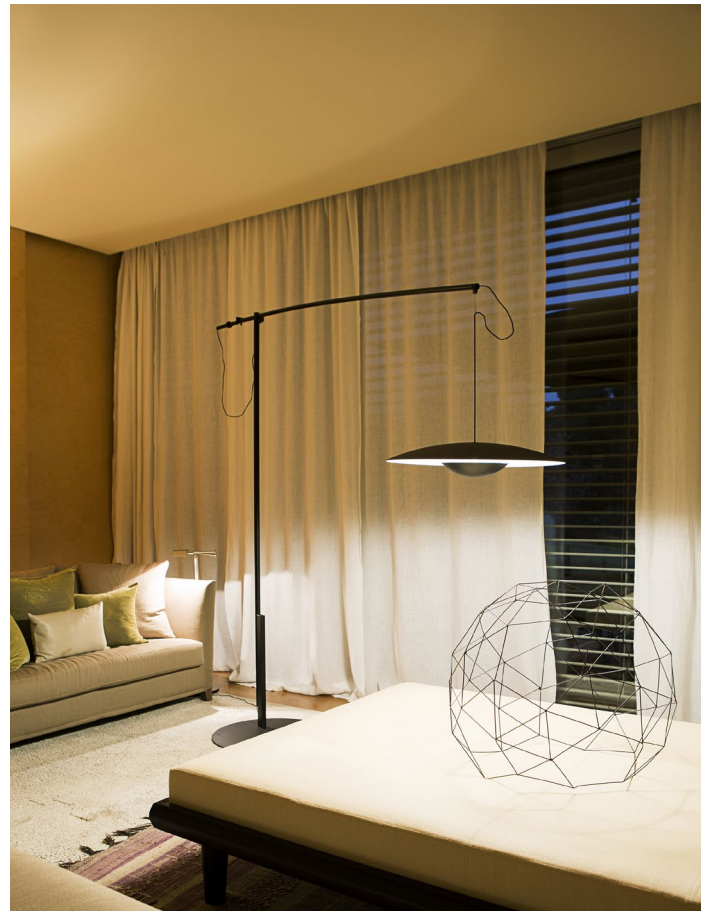
# LED-Ginger

## Joan Gaspar

**marset**

The LED-Ginger collection is notable for its great simplicity of form, its lightweight appearance and reflected direct light. A design for any type of project. Available in two very different materials, wood or metal, it provides a warm glow with no glare,

illuminating just the areas that need it. With these two highly diverse materials –wood and metal– the LED-Ginger turns into a versatile collection, rounding out the circle and offering a lamp for every lighting and decorating need.



**LED-Ginger XL 42**

Code                      Finish  
 A662-120                ● Oak-White  
 A662-121                ● Wenge-White

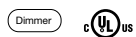
Electrical  
 Electrical Rating: 85-264VAC 21W  
 Luminaire: 698lm  
 CCT: 2700K  
 CRI: 90

Dimmable: Yes  
 Integrated dimmer: Yes  
 Dimmer Type: Foot-operated progressive in-line dimmer

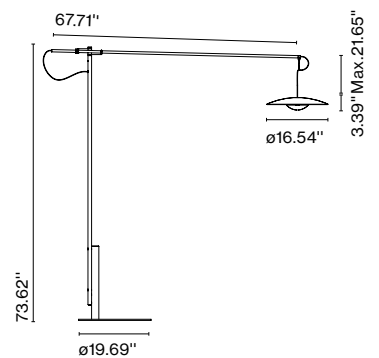
Product details  
 Cable length: 8.2 ft  
 Wire installation: Plug-in  
 Cord color: Black  
 Switch location: In-line

Materials  
 Diffuser and base: Pressed wood or brushed aluminum  
 Dissipater: Aluminum  
 Stem: Metal  
 Arm: Carbon fiber

Dry locations only



**⚠ WARNING.** California Proposition 65 Warning for California Consumers. This product can expose you to chemicals including wood dust and lead which are known to the State of California to cause cancer or birth defects or other reproductive harm. For more information go to [www.P65Warnings.ca.gov](http://www.P65Warnings.ca.gov)



[marsetusa@marset.com](mailto:marsetusa@marset.com)  
[www.marset.com](http://www.marset.com)

**Download**

Photometric data file (LDT or IES)  
 2D, 3D, Photometric Data  
 Assembly instructions

**Collection**

