

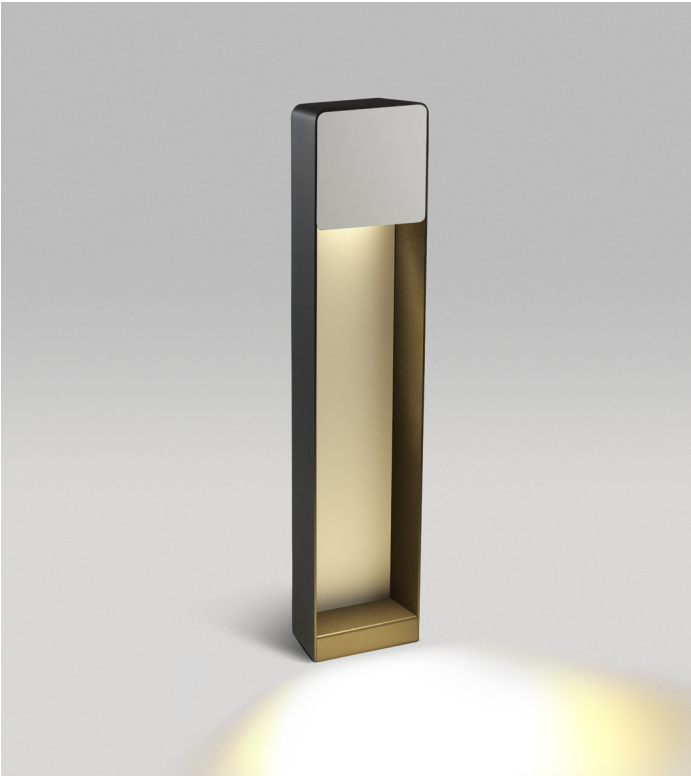


Lab Francesc Rifé

marset

These new designs bring a bit of texture and formal simplicity to outdoor spaces. With this wall lamp version, an aluminium structure surrounding the fixture creates an interior space where light and materials interact. The beauty of this collection lies

in how the light interacts with the different materials. The Lab collection continues to conceal the point of light, but its illumination – in every version, including the original – will be more powerful, with a greater presence.



Lab B35

Code A646-170 A646-171 A646-172 A646-173	Finish ● Graphite grey - White (RAL 7024-9003) ● Graphite grey - Brown (RAL 7024-8019) ● Graphite grey - Rust brown ● Graphite grey - Dark iroko	Electrical Electrical Rating: 100-277VAC 6.2W Light source: 320lm CCT: 2700K CRI: 80	
-------------------------------------------------------------	---------------------------------------------------------------------------------------------------------------------------------------------------------------------	---------------------------------------------------------------------------------------------------------	--

Dimmable: No

Materials
Structure: Aluminum
Lids: Metal, wood

Suitable for wet locations

LED included



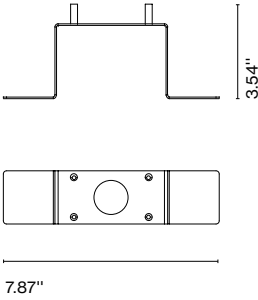
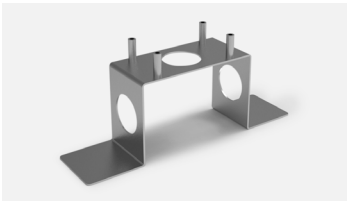
Ground fixation plate

Code
A646-067

Finish
● Stainless steel

Materials
Structure: Stainless steel

Suitable for wet locations



⚠ WARNING. California Proposition 65 Warning for California Consumers. This product can expose you to chemicals including wood dust and lead which are known to the State of California to cause cancer or birth defects or other reproductive harm. For more information go to www.P65Warnings.ca.gov

marsetusa@marset.com
www.marset.com

Download

Photometric data file (LDT or IES)
2D, 3D, Photometric Data
Assembly instructions

Collection

